



PATENT
PENDING



The Door Entry Solution of the Future

A revolutionary new
PC-Based Entry
Intercom that allows
your building visitors
to call with a simple
touch on the screen

From:



AlphaEntry™ is packed with features and is adaptable to fit virtually any facility, institution, office building, or multi-residential application!

Single Entry Updating and Single Phone Line:

Unlike other entry systems which require you to update your resident listings at every entrance station, AlphaEntry™ requires only a **single update**. All AlphaEntry™ entrance stations share a **single database**. The database can even be hosted off-site! Entry stations can also share a **single phone line** for calling, and will display our exclusive "Wait Queue" time remaining display feature.

Concierge Tabs & Switch Console:

The concierge station (or any station you choose) can view our exclusive "Emergency" and "Off-Premises" tabs. These tabs display listings for easy dialing, such as "Fire", "Police", "Ambulance", "Taxi" or "Chinese Food Delivery". The switch console allows the user to control specific devices and functions in the building. You can have a switch that says "Call Elevator" or "Turn Taxi Light On". Each control can be set as a momentary, toggle on/off, or timed switch.

Other Features:

- QwikID™ (similar to Caller ID) for concierge stations - easily see who called down, and view missed calls
- All activity is logged with photos (if camera option is used) and viewable with our Log Viewer Software
- New, quicker way for concierge / visitors to find the entry they are looking for, using our exclusive 'filtering'
- Up to four Tenant Access Codes for each resident
- Priority Listings display first on Directory Screen
- Adjustable Call Length Timer for each entry location
- Fits virtually any screen size/resolution
- Virtually unlimited name dialing capacity
- System Functions are Password Protected
- Choose from a standard QWERTY keyboard, or Alphabetical keyboard for each entry location
- Compatible with a variety of Touch-Screen and Regular monitors, kiosks, etc.

'Phone Bill', 'No Phone Bill', and 'No Phone Service':

AlphaEntry™ is the **only** building entry system that allows you to combine all four methods to call to a suite. Whether you have a standard phone line, 'No Phone Bill', an existing intercom system, or residents that do not have phone service, AlphaEntry™ can be configured to meet your needs. You can connect any combination of these types of communication paths all to one entry unit at the same time. With our 'No Phone Service' option you can allow suites that do not even have phone service to receive calls through a 'Dummy Phone'. AlphaEntry™ can be used with virtually any standard intercom or video-intercom system, to provide an elegant entry or concierge type call station (call for details).

Typical Concierge Displays



From:

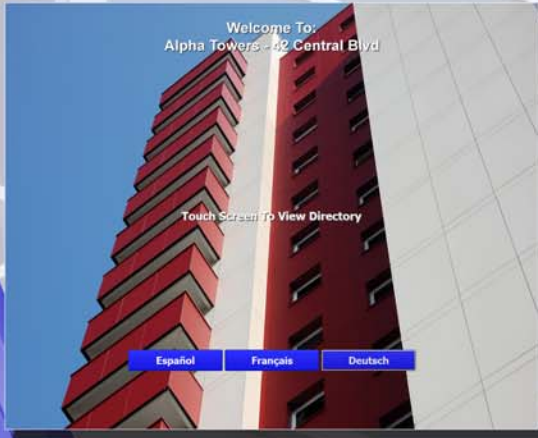
alpha
COMMUNICATIONS®



**Welcome your visitors,
and secure your building
with elegance and style!**

PATENT PENDING

Typical Welcome Screen Display



Welcome Screen:

This is the Welcome Screen that your visitor would see. Once the screen is touched or clicked, the Directory Screen will display. For concierge use, this screen protects the privacy of the names and suite numbers of your residents.

Welcome Screen Background Images:

AlphaEntry™ allows you to choose from a Single graphic image, a Slideshow display of customizable rotating images, or Holiday-Themed images.

Multi-Language Support:

Your visitors can choose to set the text and voice-prompts to English, Spanish, French, or German. Other optional languages can be added upon request!

Typical Resident Directory Screen



Directory Screen:

This is the Directory Screen that the visitor or concierge would see after they click or touch the Welcome Screen. Touching or clicking on a name initiates the calling process to the resident's telephone, 'dummy telephone', intercom, or video-intercom system! AlphaEntry™'s exclusive filtering system makes finding the correct resident quick and easy. Visitors can search by resident's name or suite number.

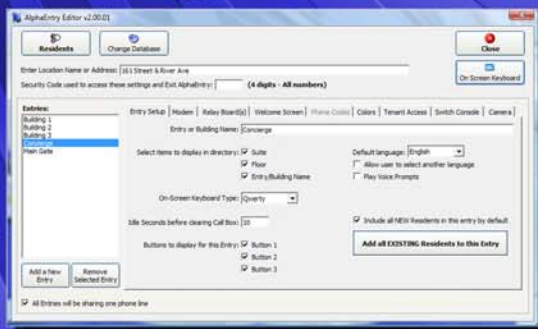
High-Contrast, High-Visibility Colors:

Commercial listings are listed in yellow, while residential listings are shown in white. These are high-contrasting colors designed to assist anyone who may be visually impaired.

Resident Privacy Option:

AlphaEntry™ allows you to hide the suite number of any or all residents in order to protect their privacy. This is particularly useful if there is a celebrity or other high-profile resident in the building. It also prevents an eavesdropper from knowing where your visitors are heading, or the suite numbers of non-occupied apartments.

Building / Resident Editor



The AlphaEntry™ Building / Resident Editor Screen provides an intuitive English language interface for updating the system's settings. There are no special codes to remember or find. **These settings can be viewed or changed locally at the building, or remotely, over the Internet, from anywhere in the world!** You can manage dozens or hundreds of AlphaEntry™ buildings from the convenience of your desktop PC.



PATENT PENDING

In any size building or community, AlphaEntry™ can display AND call virtually any number of resident names and/or phone numbers.



WALL-MOUNTED TOUCHSCREEN LOBBY STATIONS

TYPICAL APPLICATIONS INCLUDE MULTI-RESIDENTIAL APARTMENT BUILDINGS, CONDOS, CO-OPS, COMMERCIAL / OFFICE BUILDINGS, COURTHOUSES, SCHOOLS, SPORTING ARENAS, BANKS, HOTELS, AND MORE! LET US MAKE YOUR LOBBY STATION OUT OF STAINLESS STEEL OR POLISHED BRASS, OR IN A CUSTOM COLOR FINISH.



DESK-MOUNT TOUCHSCREEN STATIONS

TYPICAL APPLICATIONS INCLUDE MULTI-RESIDENTIAL APARTMENT BUILDINGS, CONDOS, CO-OPS, COMMERCIAL / OFFICE BUILDINGS, COURTHOUSES, SCHOOLS, SPORTING ARENAS, BANKS, HOTELS, MUSEUMS, AIRPORTS, AND MORE!



CUSTOM ENCLOSURES / KIOSKS

TYPICAL APPLICATIONS INCLUDE GATED COMMUNITIES, HOSPITALS, NURSING HOMES, CLINICS, INDUSTRIAL BUILDINGS / FACTORIES, AND MORE!



FREE-STANDING TOUCHSCREEN KIOSKS

TYPICAL APPLICATIONS INCLUDE MULTI-RESIDENTIAL APARTMENT BUILDINGS, CONDOS, CO-OPS, COMMERCIAL / OFFICE BUILDINGS, COURTHOUSES, SCHOOLS, SPORTING ARENAS, BANKS, HOTELS, MUSEUMS, AIRPORTS, GOVERNMENT BUILDINGS, AND MORE! KIOSKS ARE EVEN AVAILABLE FOR GATED COMMUNITIES OR OTHER APPLICATIONS WHERE THEY WILL BE USED DIRECTLY OUTDOORS.

DISTRIBUTED
BY



42 Central Drive, Farmingdale NY 11735-1202
Phone: (631) 777-5500 Fax: (631) 777-5599
Toll Free Customer Line: (800) 666-4800
www.alpha-comm.com
info@alpha-comm.com